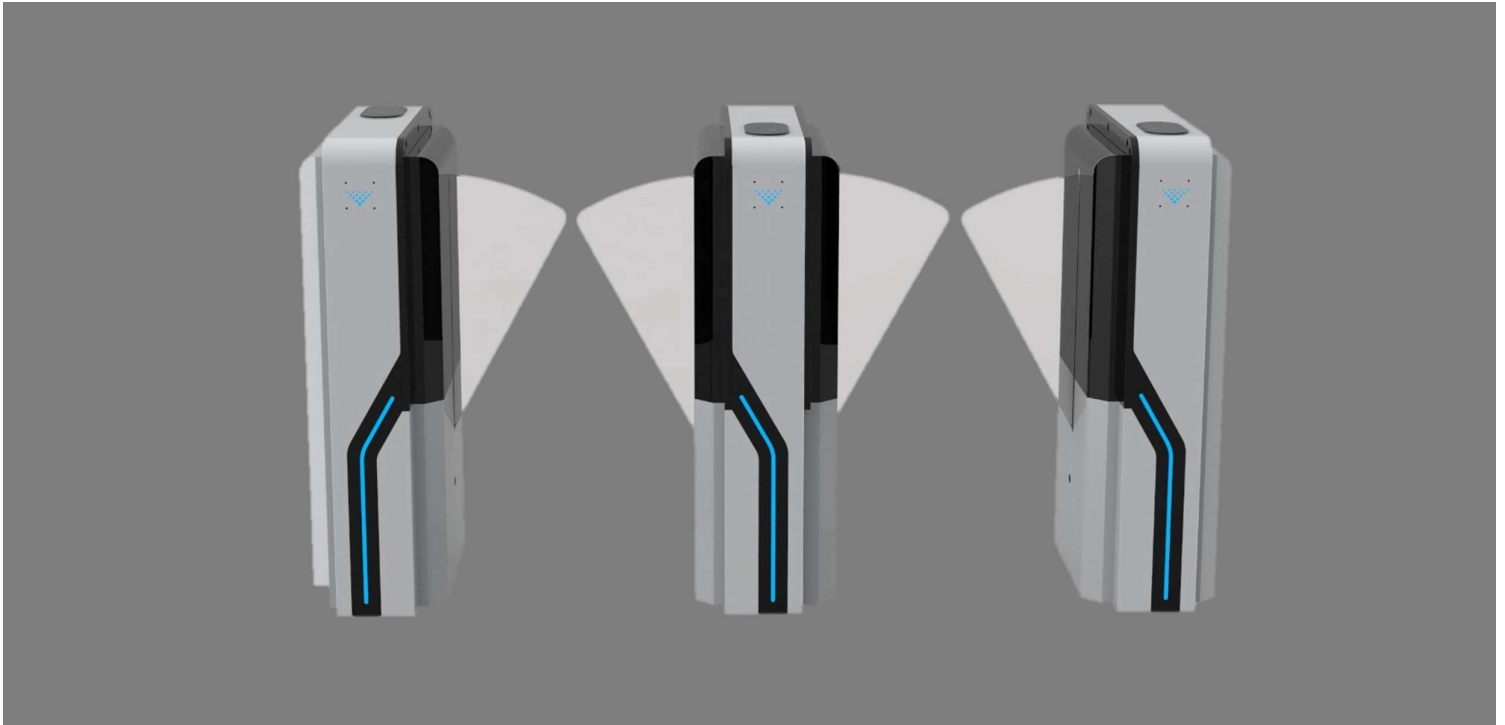


Flap Barrier TS-F-250



Products Introduction:

TS-F-250 Series Flap Turnstiles are robust products functioning to provide pedestrian access control in areas requiring moderate level of security. With its compact case design, provides a perfect solution for tight installation areas. Encoder and PLC controlled obstacle movement is provided by brushless DC motor, and enhanced with security features such as anti-tail-gating and anti-pass-back, with five pairs of optical sensors embedded in the turnstile case, which in total ensures one of the highest reliability available in market and a remarkably long life even in case of intensive usages.

TS-F-250 Series flap Gates are the perfect solution, where design, aesthetics and passage speed are important.

Application Location:

Using flap turnstiles is a popular choice for bus station, school, factory entrance and exit management. They eliminate the need for attendants at entrances and provide a means to count the number of pedestrians entering into a facility. These turnstiles paired with card readers and electronic operation are the most popular choice for subway systems and can be found in most of them.

Access Control System (Optional)



SWIPE CARD
Access with authorized card and payment card sex piece swipe to open the way



IRIS RECOGNITION
Use the authorized eyes of Iris Recognition to pass through the entry gates



FINGERPRINT RECOGNITION
Access with authorized fingerprint authentication



PALM VEIN RECOGNITION
Use authorized palm vein recognition to pass into



COIN/TICKET
Use disposable coins to coin through to enter



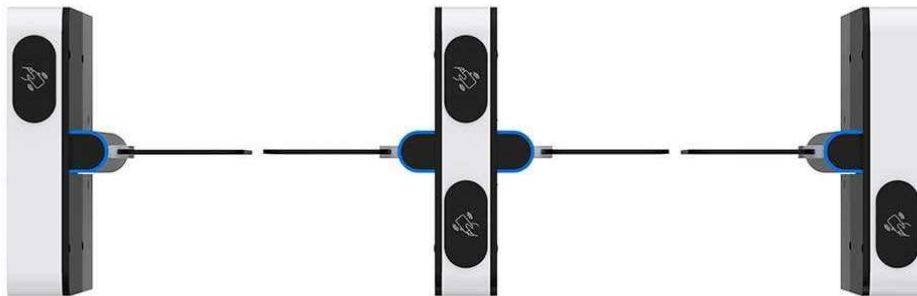
FACE RECOGNITION
Use authorized face recognition to enter



QR CODE
Scan in with authorization QR code and barcode



MANUAL OPERATION
Manual use of wired and wireless to open gates for entry



Features



Reliability

- Alloy steel flap hub prevents mechanical wear
- Casework and flap arms manufactured in SUS304 stainless steel+black paint
- Electromagnets for lock are used only when being activated. They are in standby mode when the device is idle.
- TECHNOSPACIO compact mechanism ensures the long life of the lubricating oil inside.
- High quality electrical components



Safety and User-Oriented Design

- The arm designed for emergency purpose
- No exposed screws, safer for the user.
- Smooth operation designed for mass transit application
- The pictogram on the device indicating access permission and direction of movement
- Special designed case shape, user-friendly for passenger to punch card or finger.



Easy Integration

- Flexible reader installation plate. Customers can easily integrate with third party reader
- Standard electrical interface for third party device.
- By using compact mechanism, the turnstile has more space inside for integration

- TECHNOSPACIO provides integration service in factory, with board and peripherals installed, ensuring compliance of the system. When the turnstile is delivered, just plug it in and do the setting. Save the cost of installation.



Specifications

Brand name	TECHNOS PACIO
Motor type	DC brushed motor
Flow rate	30-45 people/minute
Passage width(mm)	≤550
Power input	AC100-240V,50/60HZ
material	cold roller with powder coated
Infrared sensor	4 pairs
Input/Output signal	dry contact/relay signal
Dimension	600*280*980mm
Net weight	45 KG
Working voltage	24V
IP	IP44
Operating Temperature	-40°C~+70°C
Operating Humidity	30%~95%
Working Environment	Indoor/Outdoor covered
MCBF	5,000,000 Cycles

Demotion

